

-- NOTICE --

The America's Cup World Series, the Prada Cup, and the America's Cup Match will be held in Auckland between SAT 12 DEC 20 and SUN 21 MAR 21.

This AIP Supplement notifies the special America's Cup procedures, including four temporary restricted areas, **NZR192**, **NZR193**, **NZR194** and **NZR195** prescribed to facilitate the safety of air navigation as follows:

NZR192 Viaduct, Auckland

Upper limit: 1,500 ft AMSL

Lower limit: Surface

Activity: Permanently active between 2012112100 and 2103210900 (**12 DEC 2020, 1000 and 21 MAR 2021, 2200 NZDT**); America's Cup

Administering

Authority: America's Cup Event Ltd, Airspace co-ordinator, Tel (027) 218 7451, airspace@americascup.com

Conditions of use: Aircraft may not enter NZR192 except in emergency circumstances, or with prior approval from the Administering Authority.

NZR193 North Shore, Auckland

Upper limit: 2,000 ft AMSL

Lower limit: Surface

Activity: When advised by NOTAM between 2012162300 and 2103210900 (**17 DEC 2020, 1200 and 21 MAR 2021, 2200 NZDT**); America's Cup

Administering

Authority: America's Cup Event Ltd., Airspace co-ordinator, Tel (027) 218 7451, airspace@americascup.com

Frequency: 130.1 MHz 'Cup Traffic'

Conditions of use: See NOTE and Operating Conditions below.

NZR194 Rangitoto, Auckland

Upper limit: 2,000 ft AMSL

Lower limit: Surface

Activity: When advised by NOTAM between 2012162300 and 2103210900 (**17 DEC 2020, 1200 and 21 MAR 2021, 2200 NZDT**); America's Cup

Administering

Authority: America's Cup Event Ltd., Airspace co-ordinator, Tel (027) 218 7451, airspace@americascup.com

Frequency: 130.1 MHz 'Cup Traffic'

Conditions of use: See NOTE and Operating Conditions below.

**Auckland — America's Cup Temporary Restricted Areas
Effective: 12 DEC 20 to 21 MAR 21**

-- NOTICE --

NZR195

Howick, Auckland

Upper limit:

2,000 ft AMSL

Lower limit:

Surface

Activity:

When advised by NOTAM between 2012162300 and 2103210900 (**17 DEC 2020, 1200 and 21 MAR 2021, 2200 NZDT**); America's Cup

Administering

Authority:

America's Cup Event Ltd., Airspace co-ordinator, Tel (027) 218 7451, airspace@americascup.com

Frequency:

130.1 MHz 'Cup Traffic'

Conditions of use:

See NOTE and Operating Conditions below.

NOTES

1. When NZR193, NZR194, NZR195 are active, the airspace classification within the entirety of NZR193, NZR194, NZR195 becomes class G (uncontrolled).
2. The Administering Authority (call sign Cup Base) is not an air traffic service; no traffic information or traffic avoidance advice will be provided.
3. The portion of VFR Transit Lane NZT159 Whangaparaoa, East Whenuapai coincident with NZR193 and NZR194 are disestablished when NZR193 and NZR194 are active.
4. No banner towing aircraft, paragliders, parasails, hang gliders, balloons, kites, or gliders are permitted.
5. Emergency and NZDF aircraft may operate within NZR193, NZR194, NZR195 without Administering Authority prior approval, subject to complying with procedures contained within the pilot briefing package and all other conditions of use.

Operating Conditions

Each pilot entering NZR193, NZR194 and NZR195 must:

1. have completed the America's Cup pilot registration process and obtained an authorisation number from the America's Cup Administering Authority; and
2. have the specific approval of the Administering Authority, Airspace coordinator, airspace@americascup.com; and
3. shall be operated by two pilots or a pilot and observer unless otherwise approved by the Administering Authority. Observers shall have no other technical duties (such as professional camera operation) while within the restricted airspace; and
4. shall be operated with two serviceable VHF radios; and
5. shall operate their aircraft landing lights and anti-collision lights if fitted; and
6. set altimeters to the Auckland ATIS QNH, (127.8 MHz); and
7. shall operate in accordance with the circuit pattern requirements included in the America's Cup pilot briefing package; and
8. operate a transponder on Mode A and C; and

Auckland — America's Cup Temporary Restricted Areas
Effective: 12 DEC 20 to 21 MAR 21

-- NOTICE --

9. maintain a listening watch, making traffic calls to 'Cup Traffic' on frequency 130.1 MHz during the following times:

- a. before entering the restricted areas;
- b. before joining, during and leaving the established circuit patterns around boat racing courses;
- c. at appropriate intervals within the restricted areas;
- d. upon leaving the restricted areas.

In addition to 'Cup Traffic' transmitting on 130.1 MHz, the Administering Authority 'Cup Base' will be monitoring 130.1 MHz during times of airspace activation. 'Cup Base' will provide notice to pilots on which area is activated for racing and, as the Administering Authority, may only provide information to ensure aircraft flying within the bounds of the restricted areas in respect of:

1. Issuing approvals to aircraft to enter and operate within the restricted areas.
2. The number of aircraft within the airspace.
3. The established circuit/circuits in use.
4. At the request of pilots, provide information on the general location of any aircraft that 'Cup Base' has knowledge of.
5. Give details of temporary hazards to air navigation associated within the bounds of the restricted areas.
6. Any other information to meet the airspace conditions imposed by CAA NZ or the Administering authority.

This includes limiting aircraft traffic numbers within the activated restricted area where appropriate. Prior to entry to any activated restricted areas, pilots must broadcast their position and intentions to the Administering Authority 'Cup Base' on 130.1 MHz.

A back up frequency is available on 130.25 MHz during airspace activation as a contingency to the primary frequency 130.1 MHz.

Pilot Approval

The approval process requires each pilot to request the America's Cup pilot briefing package compiled by the Administering Authority and to return the signed confirmation document. This document confirms that the pilot has received, understood, and will comply with the requirements outlined in the pilot briefing package.

Unless further approval has been gained by prior arrangement with the Administering Authority, aircraft may not enter NZR192, Viaduct Basin, except in emergency circumstances.

Pilots who may wish to enter America's Cup airspace should contact the Administering Authority at the earliest opportunity to request the America's Cup pilot briefing package, by contacting the Administering Authority as below:

<i>Administering Authority:</i>	America's Cup Event Ltd
<i>Email:</i>	airspace@americascup.com
<i>Phone:</i>	(027) 218 7451

Pilots will not be permitted to enter the restricted areas detailed in this AIP Supplement unless they receive an authorization number from the Administering Authority.

Auckland — America's Cup Temporary Restricted Areas
Effective: 12 DEC 20 to 21 MAR 21

-- NOTICE --

Airspace Activation

NZR192, Viaduct, is permanently active around the America's Cup village.

Activation of NZR193, NZR194, NZR195 will be advised by NOTAM not later than 1100 NZDT on race days.

On race days the Administering Authority will also notify airspace activation information via an email distribution list. Please email airspace@americascup.com to request addition to this distribution list.

Confirmation of restricted airspace activation will be advised with a general notification on frequencies 120.4 MHz and 130.1 MHz at least 10 minutes prior to activation time. Deactivation will normally be 10 minutes after completion of racing.

VFR Transit Procedures

Transiting aircraft may operate in that portion of the Whangaparaoa VFR transit lane that is not part of NZR193 and NZR194.

NZR193, NZR194 and NZR195 are adjacent to portions of the Auckland CTA and Whenuapai CTR. Pilots must request a clearance from the relevant ATC unit prior to entering controlled airspace. Pilots may transit above portions of the temporary restricted areas within uncontrolled airspace up to 2500 ft. When transiting, caution should be exercised when operating near the controlled airspace boundaries.

To facilitate position reporting for aircraft following an easterly route and remaining clear of NZR193, NZR194 and NZR195, Visual Reporting Points have been temporarily established at Browns Bay, Billy Goat Point, Deadmans Bay, and Duders Beach. Radio procedures within the Hauraki Gulf CFZ and Auckland City MBZ (120.4 MHz) apply when outside of restricted airspace.

IFR Transit Procedures

A number of instrument flight procedures in the vicinity of the restricted areas are impacted during the activation of NZR193, NZR194 and NZR195.

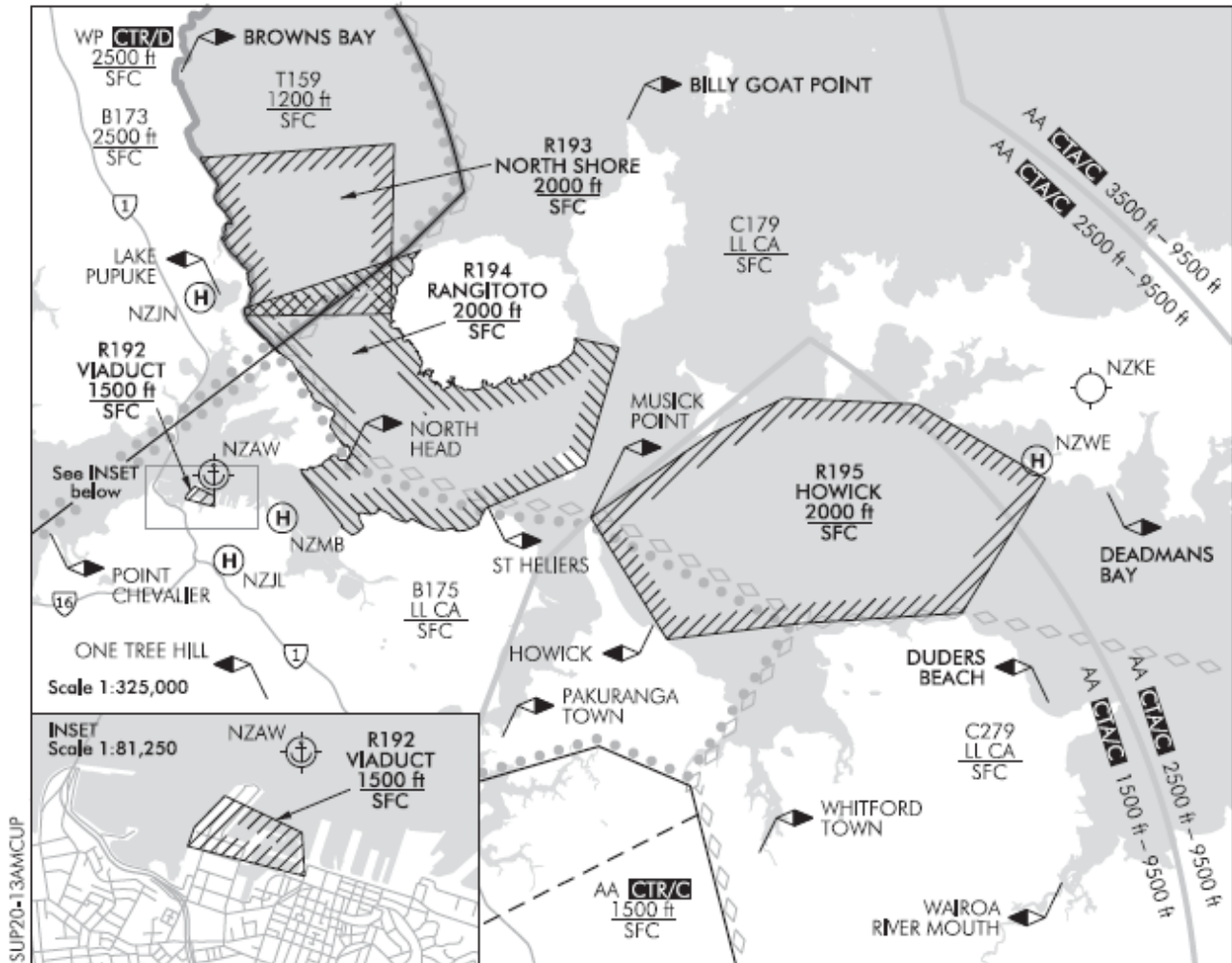
Airways NZ ATS will only issue clearances to aircraft within controlled airspace for instrument flight procedures that do not infringe these areas. For those procedures not available, expect alternative instructions to be issued to remain clear of the areas.

For those instrument flight procedures within uncontrolled airspace, pilots are to plan to remain clear of the restricted areas, unless prior approval from the Administering Authority has been obtained. For all IFR helicopter procedures at Mechanics Bay (NZMB), these aircraft may enter the restricted areas in accordance with the pilot briefing package requirements and emergency aircraft procedures.

Prescribed pursuant to Civil Aviation Rules, Part 71 Designation and Classification of Airspace, under a delegated authority issued by the Director of Civil Aviation.

Auckland — America's Cup Temporary Restricted Areas
Effective: 12 DEC 20 to 21 MAR 21

-- NOTICE --



**Auckland — America's Cup Temporary Restricted Areas
Effective: 12 DEC 20 to 21 MAR 21**